



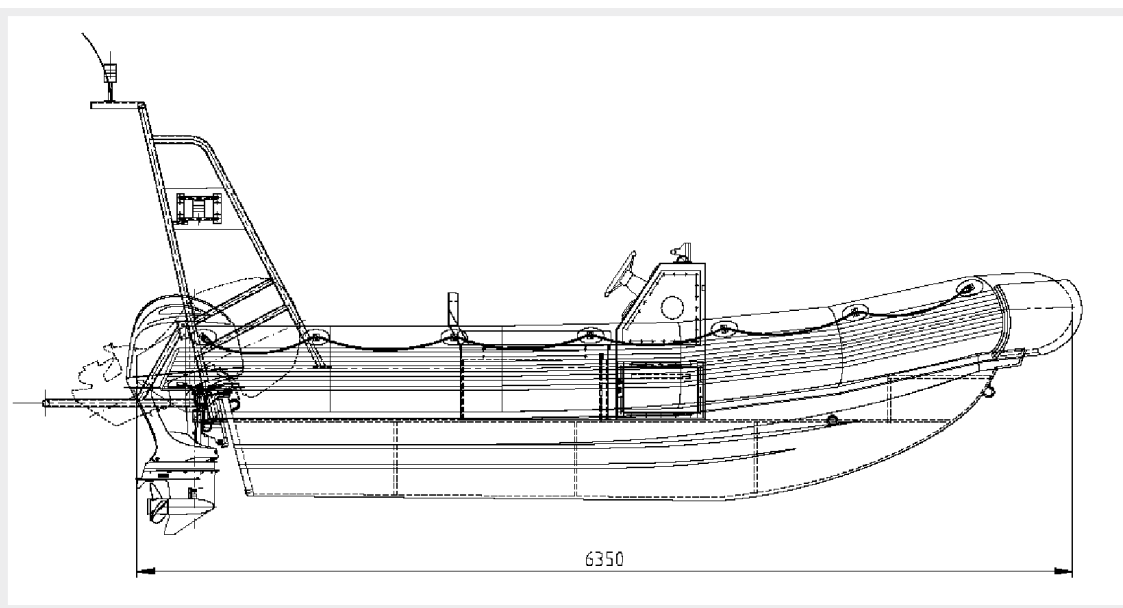
## WRH 635 INDUSTRIAL OUTBOARD SERIES





# WORKRIB 6.35





## SPECIFICATIONS

### Capacity

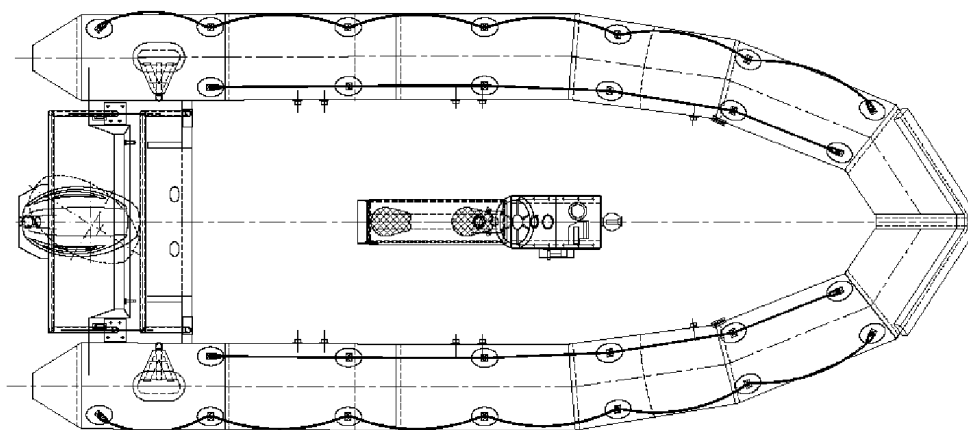
Maximum number of persons	15
Maximum load	1,500 kg
Useable deck area	7,50 m <sup>2</sup>
Volume buoyancy tube	3,00 m <sup>3</sup>

### Dimensions/Weight

Overall length	6,35 m
Inside length	5,40 m
Overall beam	2,70 m
Inside beam	1,55 m
Weight empty incl. fuel excl. engine(s)	1,350 kg
Maximum engine(s) weight	300 kg
Buoyancy tube diameter	0,57 m
Number of buoyancy tube compartments	5

### Propulsion

Outboard engine(s)	Single XL or twin L
Minimum engine power	59 kW / 80 hP
Maximum engine power single	134 kW / 180 hP
Maximum engine power twin	2x 67 kW / 90 hP



### Constructions

Hull	GRP
Tube	1670 dtex 1500g/ m <sup>2</sup> hyalon coated neoprene
Console	Coated seawater resitant aluminium
Seating arrangement	Coated seawater resitant aluminium

### General

Fuel	Unleaded petrol (200L/53 US gal.)
Steering	Hydraulic
Electrical systems	12 Volts DC

### Performance

Maximum speed	37 knots
Average range/ operating hours	150 Nm/ 8 h (@cruising speed)

# STANDARD PART AND ACCESSORIES LIST

## OUTBOARD INDUSTRIAL SERIES

	635	685	735	785	835
<b>Tube</b>					
Commercial heavy duty tube	s	s	s	s	s
All available standard colours	s	s	s	s	s
Full foam tube	o	o	o	o	o
Foam air tube	o	o	o	o	o
Pressure safety valves (set 5pc.)	s	s	n/a	n/a	n/a
Inflation valves (set 5pc.)	s	s	n/a	n/a	n/a
Inflation valves (set 7pc.)*	n/a	o	s	s	s
Pressure safety valves (set 7pc.)*	n/a	o	s	s	s
Safety chambers (5pc.)	s	s	n/a	n/a	n/a
Safety chambers (7pc.)	n/a	o	s	s	s
Double rubbing strake black	s	s	s	s	s
Extra rubbing strake black	o	o	o	o	o
Tube transom straps (set 2pc.)	s	s	s	s	s
Bow protector	s	s	s	s	s
Life line inside	s	s	s	s	s
Life line outside	s	s	s	s	s
Paddle holders (Incl. wooden paddle set 2pc.)	o	o	o	o	o
Non-skid on top of tube	o	o	o	o	o

	635	685	735	785	835
Rescue cradle attachment (set 2pc.)	o	o	o	o	o
Reflection tape	o	o	o	o	o
Characters capital letter	o	o	o	o	o
Storage bag (mounted on tube)	o	o	o	o	o
Grabbing handle (neoprene)	o	o	o	o	o

**S = Standard   o = Option   n/a = Not Available   \* Only in combination with 7 chambers**

### Hull

Commercial heavy duty hull	s	s	s	s	s
All available colours	s	s	s	s	s
Granulate non-skid deck	s	s	s	s	s
Stainless towing eye 1x front 2x aft	s	s	s	s	s
Self-bailer hose, round 100 (set 1pc.)	s	s	s	s	s
Freeman hatch in deck <sup>1</sup>	n/a	o	o	o	o
Strap down U bold (storage bow box)*	o	o	o	o	o
Reflection tape	o	o	o	o	o
Storage bow box	o	o	o	o	o
Waterproof under deck cable routing	s	s	s	s	s
Lifting eyes with lifting sling (set 4pc.)	o	o	o	o	o
Single fuel tank under deck 300l 80 US gal.	n/a	n/a	s	n/a	n/a
Single fuel tank under deck 350l 92 US gal.	n/a	n/a	n/a	s	n/a
Single fuel tank under deck 400l 105 US gal.	n/a	n/a	n/a	n/a	s
Electronic fuel sensor and meter	s	ss	s	s	s
Fuel water separating filter	s	s	s	s	s
One way breather with shutoff valve	s	s	s	s	s

**S = Standard   o = Option   n/a = Not Available   \* Only in combination with storage bow box**

<sup>1</sup>All the freeman hatches will be placed above watertight compartments in the GPR hull with drain plug

### Console and seating

Jockey console 3 persons*	s	o	n/a	n/a	n/a
Backrest 3x	s	s	n/a	n/a	n/a
Neoprene backrest and seat cushions	s	s	n/a	n/a	n/a
Fuel tank in Jockey console 225l 53 US gal. (3 pers.)	s	s	n/a	n/a	n/a
Electronic fuel sensor and meter	s	s	s	s	s

	635	685	735	785	835
Grabbing handle on jockey console	s	s	n/a	n/a	n/a
Throttle base single and twin engine configuration	s	s	s	s	s
Compass mounted on console	s	s	s	s	s
Pilot and navigator console*	n/a	n/a	s	s	s
Grabbing handle on pilot console	n/a	n/a	s	s	s
Hydraulic steering system	s	s	s	s	s
Single pilot seat	n/a	n/a	s	s	s
Single navigator seat with backrest and grabbing handle	n/a	n/a	s	s	s
Extra single pilot seat with backrest	n/a	n/a	o	o	o
Extra single navigator seat with backrest and grabbing handle	n/a	n/a	o	o	o

**S = Standard   o = Option   n/a = Not Available   \* Coated seawater resistant aluminium**

### Single engine and rigging

115 HP Yamaha*	s	o	o	n/a	n/a
130 HP Yamaha*	o	s	o	o	n/a
175 HP Yamaha*	o	o	s	o	o
200 HP Yamaha*	n/a	o	o	s	o
250 HP Yamaha*	n/a	n/a	n/a	o	s
Other single engine types*	o	o	o	o	o
Twin engines*	o	o	o	o	o

**S = Standard   o = Option   n/a = Not Available**

**\* Check the specifications for the minimum and the maximum Horsepower's from our work ribs**

### n- Frame

Double n-frame 40x5mm	s	s	n/a	n/a	n/a
Double n-frame 50x5mm	n/a	n/a	s	s	s
Navigation light protection bar	s	s	s	s	s
Antenna/ top light platform	s	s	s	s	s
Top light base	s	s	s	s	s
Double n-frame 40x5mm with self-righting system	o	o	n/a	n/a	n/a
Double n-frame 50x5mm with self-righting system	n/a	n/a	o	o	o
VHF antenna	o	o	o	o	o

	635	685	735	785	835
GPS antenna	o	o	o	o	o
Deck lights	o	o	o	o	o
Radar reflector	o	o	o	o	o
<b>S = Standard    o = Option    n/a = Not Available</b>					
<b>Electical</b>					
Led navigation lights (red/green/white)	s	s	s	s	s
Spare led bulb	o	o	o	o	o
Waterproof electrical distribution box	s	s	s	s	s
Single battery system	s	s	s	s	s
Main switch	s	s	s	s	s
Backup battery system. battery, battery box, emergency switch*	o	o	o	o	o
Waterproof fuse box (5 fuses)	s	s	s	s	s
Waterproof fuse box (7 fuses)	o	o	o	o	o
VHF (antenna included)	o	o	o	o	o
External loudspeaker VHF	o	o	o	o	o
GPS top mound	o	o	o	o	o
GPSMAP 7 inch screen	o	o	o	o	o
Deck lights (set 2pc.) mounted on frame <sup>1</sup>	o	o	o	o	o
Handheld search light <sup>1</sup> mounted on console	o	o	o	o	o
Waterproof switch (1 pc)	s	s	s	s	s
Horn <sup>1</sup>	o	o	o	o	o
<b>S = Standard    o = Option    n/a = Not Available    * Standard on twin engine</b>					
<b><sup>1</sup> waterproof switch and indication plate included</b>					
<b>General</b>					
Foot pump	s	s	s	s	s
Paddles adjustable	s	s	s	s	s
Tube repair kit	s	s	s	s	s
Toolkit	s	s	s	s	s
Jason cradle large	o	o	o	o	o
Jason cradle small	o	o	o	o	o
SOLAS package	o	o	o	o	o



	635	685	735	785	835
User's manual	S	S	S	S	S
Spare-parts list	S	S	S	S	S
Electrical inflation pump	O	O	O	O	O
Overall cover	O	O	O	O	O
Console cover	O	O	O	O	O
Fire extinguisher 2kg	S	S	S	S	S
<b>S = Standard    O = Option</b>					

**Note!** If our standard configuration don't match your needs please check our custom builds.



**Address**

Het Nieuwe Werk 40  
Postal code 1781 AL  
Den Helder  
The Netherlands

**Email**

[info@workribs.com](mailto:info@workribs.com)

**Phone**

+31 (0)223 694 931