



WORKRIBS 6.35 FAST RESCUE BOAT



‘The test results showed that it fared well above the minimum requirements.’



THE BEST PERFORMING SEA-GOING HULL

Why to choose

The WrH635frb was the first model developed as a 15 persons fast rescue boat for survey and stand-by Vessels. There was a demand for reliable fast rescue boats for the professional market. Many years of experience operating and maintaining fast rescue boats were used during the design and fabrication of the WrH635. This model excels in operability, manoeuvrability, reliability and durability which is unique for this market. All of the fast rescue boats critical items have been considered and has resulted in an ultra-strong hull, a well-protected tube, very reliable electrical system and secure propulsion using two Yamaha outboard engines.

The WrH635 is self-bailing as the floor of the boat is higher than water level, even while the boat is not running at speed. This is a unique system for this size of fast rescue boats and increases its level of safety and comfort. The boat is certified according to soLas/MeD. This means that the boat has been reviewed and tested against a variety of regulations. The test results showed that it fared well above the minimum requirements.

Certified safety

All our boats are managed and built according to a certified quality management system developed specifically for Work ribs Holland. The company works according to an Iso 9001 quality system and

holds a MeD module D for the fabrication of the fast rescue boats. Work ribs Holland uses Lloyds register of shipping as a certifying authority. Each prototype is tested under very severe conditions according to soLas/MeD. These tests simulate the most demanding circumstances; it ensures that the rescue boat is ready for operation.

The boat has to pass the following tests:

- Endurance, speed and fuel consumption test;
- Damage, stability, Loading and self-righting test;
- Several operational tests;
- Strength, Impact and Drop test and operation following the 'strength, Impact and Drop' test.

WORKING WITH TECHNOLOGY

Buoyancy tube

The buoyancy tube is made of orca Neoprene- Hypalon fabric: Polyester High tenacity 1670 dtex. This fabric meets the highest level of weather proof, chemical and abrasion resistance. The tube is constructed out of 5 chambers, each chamber easy to inflate and deflate using its own valves. The tube is fabricated with the highest accuracy to ensure a perfect seal preventing any leaks. The sides are provided with a neoprene rubbing strake on both sides and the bow is provided with special bow protection.

Deep V hull construction

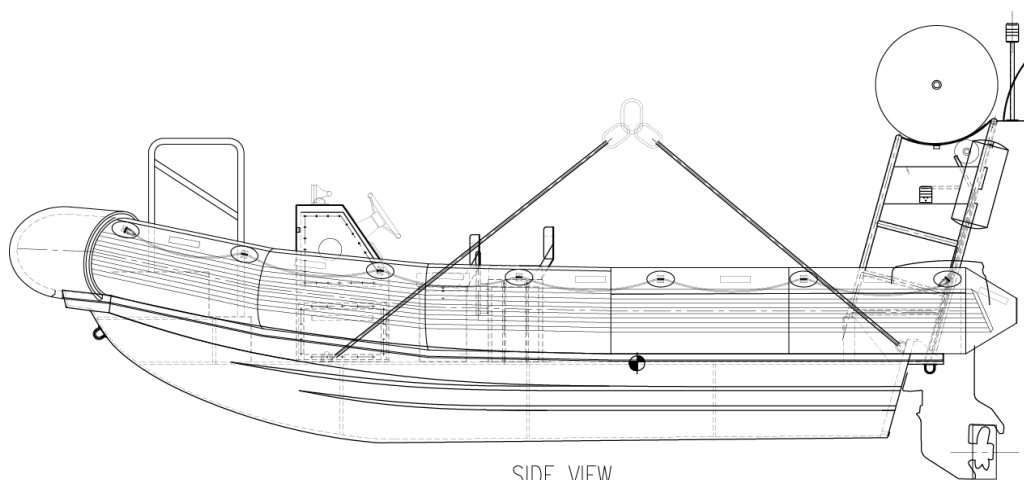
The GrP hull is the foundation of a rigid inflatable boat and is designed and fabricated according to strict specifications. All of our hulls are fabricated with a hand lay-up lamination process under the proper temperature and humidity levels. The hulls are constructed from a fire retardant polyester resin reinforced with a balanced number of layers from different types of glass fibre and woven roving. This ensures for an extremely strong and rigid hull, unique on the market.

Best of both worlds

When you purchase the WrH635frb you get a multipurpose rigid Inflatable boat as it excels as being a perfect workboat and a fast rescue boat. "Our rigid Inflatable boats were developed to meet the requirements for the most demanding

circumstances, and we adapted and improved our workboats to be certified by soLas. I am proud that we have one of the toughest, most functional, reliable and certified, turn-Key rescue boats on the market today" Richard Kossen - GM Work ribs Holland B.V.





SIDE VIEW

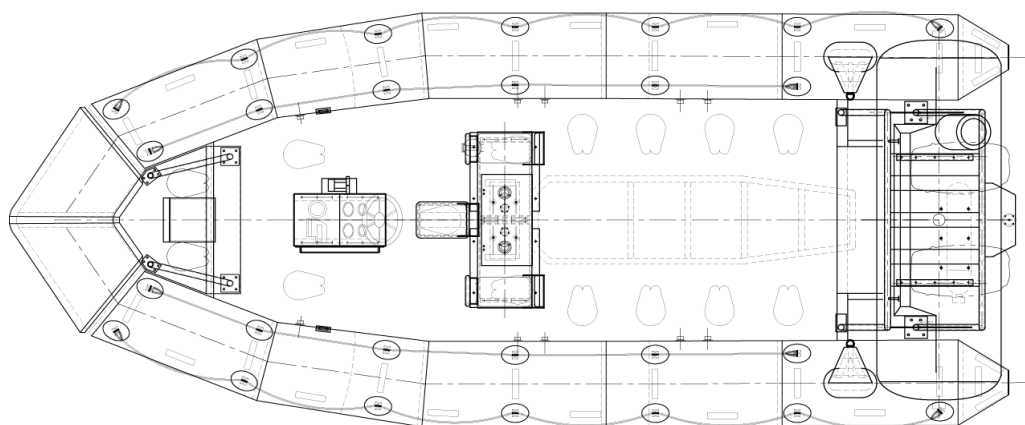
GENERAL ARRANGEMENTS SPECIFICATIONS

Capacity

Maximum number of persons	15
Maximum load	1.237,5 kg
Max gross weight (Own weight and all loads)	2.612,5 kg
Floor board useable area	7,5 m ²
Buoyancy tube volume	3,0 m ³

Dimensions

Overall length	6,35 m
Inside length	5,40 m
Overall beam	2,80 m
Inside beam	1,65 m
Weight empty incl. fuel and engines	1.375 kg
buoyancy tube diameter	0,57 m
Number of buoyancy compartments	5
transom height	0,70 m



TOP VIEW

Engine power

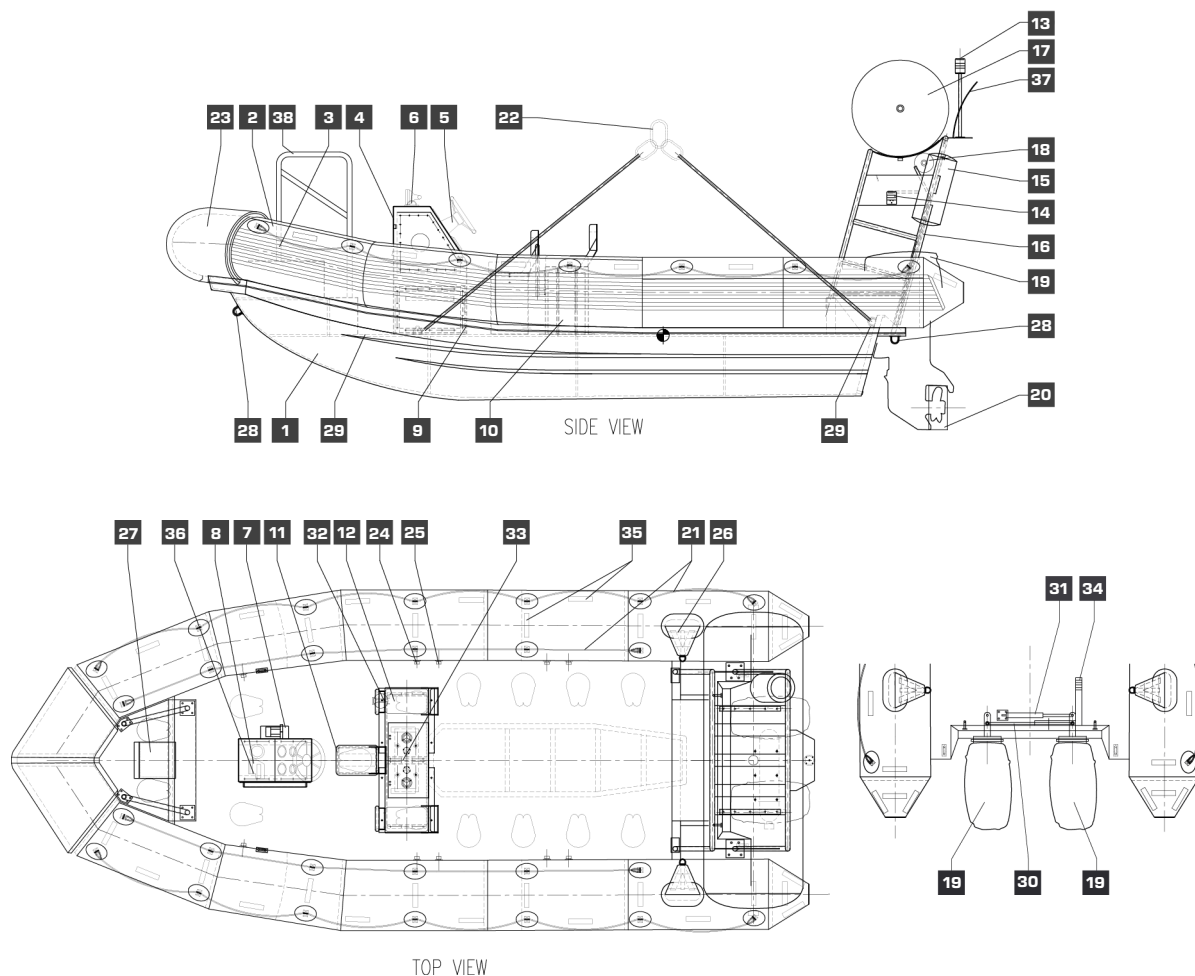
Engine power	2 x 70 hp to 2 x 90 hp
Engine weight	2 x 120 kg
Propulsion	Propellors
Max. speed	35 knots

Constructions


Hull	Fire retardant GRP
Tube	ORCA 866 1670 dtex 1500g/m2 HYPALON

General

Fuel	2 x 80 liter Petrol
Steering	Hydraulic
Electrics	12 V.
Lifting	4 Leg Sling



- | | | |
|---|--|--|
| 1 Polyester hull | 15 Radar reflector | 28 SS towing eye |
| 2 Inflatable tube | 16 self righting frame | 29 SS Lifting eye |
| 3 Rubbing strake | 17 Inflatable self-righting bag | 30 SS Lifting eye |
| 4 Console with Instrumentation
incl. waterproof VHF | 18 Gas bottle for self-righting
bag | 31 Hydraulic cylinder |
| 5 Steering wheel | 19 Yamaha outboard engines | 32 fire extinguisher |
| 6 Compass | 20 Propellor protector | 33 Fuel fill opening |
| 7 Throttle | 21 Lifeline | 34 Emergency steering handle |
| 8 Hand held search light | 22 Lifting sling (4-leg) | 35 Reflection tape |
| 9 Console and battery box | 23 Bow protector | 36 Manually controlled search
light (bulb 12V 50W) |
| 10 Seat and fuel tank box | 24 Inflation valve | 37 VHF antenna |
| 11 Coxswain seat | 25 Pressure safety valve | 38 Board landing platform
(option) |
| 12 Crew seat | 26 Tube/transom strap | |
| 13 Mast head light | 27 Front deck cover, bowbox
incl solas-equipment | |
| 14 Port/stbd lights | | |

A red and black inflatable rescue boat is being hoisted by a white PALFINGER crane on a ship's deck. The boat is suspended by orange and green slings. The crane's arm is visible in the upper right, with the brand name 'PALFINGER' clearly marked. The background shows the ship's white structure and railings.

‘One of the toughest, most functional, reliable and certified, turn-Key rescue boats.’

WORKRIBS SERVICES

Advantages of Workribs

- Strong handmade GRP hulls
- Custom built tubes
- High quality materials
- Waterproof electrical wiring systems
- Made to measure rigging equipment
- Seaworthy deep V-Hull
- Self-bailing when fully operational
- Safe and easy to hoist
- Low maintenance costs
- Easily interchangeable parts (in stock)

Work Area

Workribs rescue boats are deployed as fast rescue boats for seagoing vessels, the Oil and Gas Offshore Industry, Rescue Organisations as well as for specific Government missions.

Fabrication

Work Ribs Holland employs experienced personnel and works according to the ISO 9001 certified

management system. Each boat is manufactured by specialists in their own discipline and all of our employees are well aware of the importance of working on Life Saving Appliances.





Address

Het Nieuwe Werk 40
Postal code 1781 AL
Den Helder
The Netherlands

Email

info@workribs.com

Phone

+31 (0)223 694 931